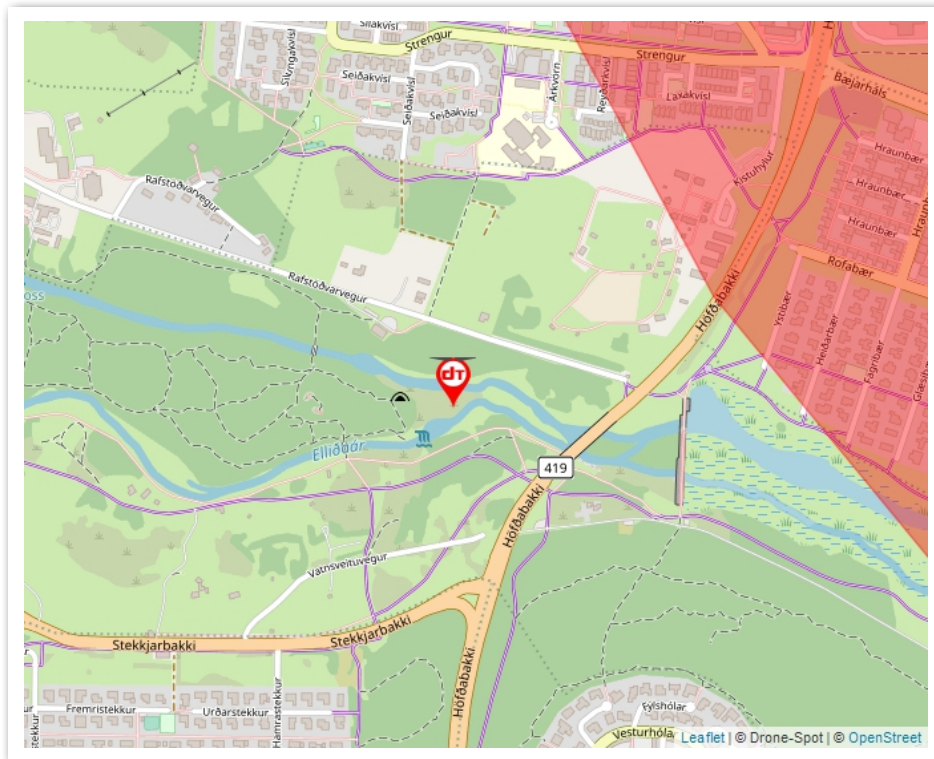


FICHE DE VOL

Stórifoss - (IS)



Coordonnées GPS : **Latitude : 64.1165561, Longitude : -21.8230518**

Date : 26/08/2019

Proposé par : Árni Gunnar Róbertsson

Plafond de vol : 100 m. max.

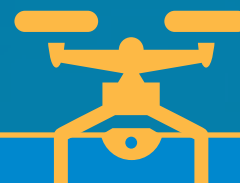
Type : Montagne

Accessibilité : Accès direct en voiture

Notes : Ef tónlist er sett inn á myndskæði með hjálp Youtube þá hefur það áhrif á hámarksupplausnina þeas. það verður max 1080p ef það var 4k í upphafi. Hér er upptakan af Stórafossi aftur hrá og í 4k.

Check list

- Zone autorisée,
- Firmwares à jour (drone, radiocommande, application, ...),
- Conditions météorologiques correctes,
- Inspection visuel du drone et des hélices,
- Dépose des protections (gimbal, caméra, ...),
- Carte SD insérée, espace de stockage correct,
- Etat correct de la lentille de la caméra (Nettoyage éventuel, ...),
- Périphériques chargés et connectés (Radiocommande, smartphone, tablette, ...),
- Batterie du drone chargée et correctement insérée,
- Calibrage correct (Boussole, horizon, ...),
- Altitude minimale pour le retour à la maison (RTH),
- Altitude maximale de vol,
- Nombre de satellites verrouillés,
- Zone de décollage dégagée,
- Point home correctement enregistré,
- ...



Use of Drones in Iceland

FOR LEISURE

MANDATORY RULES:



Mark the drone with name, address & phone number.



Total weight may not exceed 3 kg within urban areas & 25 kg in rural areas.



A drone with a total weight of 20 kg or more shall be insured.



Do not fly over crowds of people.



Do not fly higher than 120 m above ground or sea.



Keep the drone in sight at all times.



Please follow the general rules on the protection of property & privacy.



It is forbidden to fly within 2 km from international airports & 1.5 km from other airports.



Do not fly within 150 m from public buildings.



Do not fly closer to residential buildings or premises than 50 m within urban areas & 150 m in rural areas without approval by the owner.



Check all flight regulations & restrictions for the flying area before flying.



The operator is responsible for damages that may arise from the use of the drone.



Drone flights may not interfere with air traffic, ship or vehicle traffic. Stay far away from manned aircraft.

RECOMMENDATIONS:



Read carefully the instructions before use. Plan your flight in advance, check the flight area, your drone safety & condition.



Check regulation No. 990/2017 on the operation of remotely piloted aircraft.



The operating area shall be defined to ensure sufficient distance from people, animals and property.



Use the drone with caution and fly safely.



Use of Drones in Iceland

COMMERCIAL USE

MANDATORY RULES:



Mark the drone. Register flight info & make a safety assessment for urban areas.



Total weight of the drone may not exceed 7 kg within urban areas & 25 kg in rural areas.



A drone with a total weight of 20 kg or more shall be insured.



Register the drone at www.icetra.is, where you can also apply for exemptions from restrictions.



Do not fly higher than 120 m above ground or sea.



Do not fly over crowds of people.



Drone flights may not interfere with air traffic, ship or vehicle traffic. Stay far away from manned aircraft.



Do not fly closer to residential buildings or premises than 50 m within urban areas & 150 m in rural areas without approval by the owner.



Please follow general rules on the protection of property & privacy.



It is forbidden to fly within 2 km from international airports & 1.5 km from other airports.



Do not fly within 150 m from public buildings.



Check all flight regulations & restrictions for the flying area before flying.



Keep the drone in sight at all times.



The operator is responsible for damages that may arise from the use of the drone.

RECOMMENDATIONS:



Read carefully the instructions before use. Plan your flight in advance, check the flight area, your drone safety & condition.



The operating area shall be defined to ensure sufficient distance from people, animals and property.



Check regulation No. 990/2017 on the operation of remotely piloted aircraft.



Use the drone with caution and fly safely.